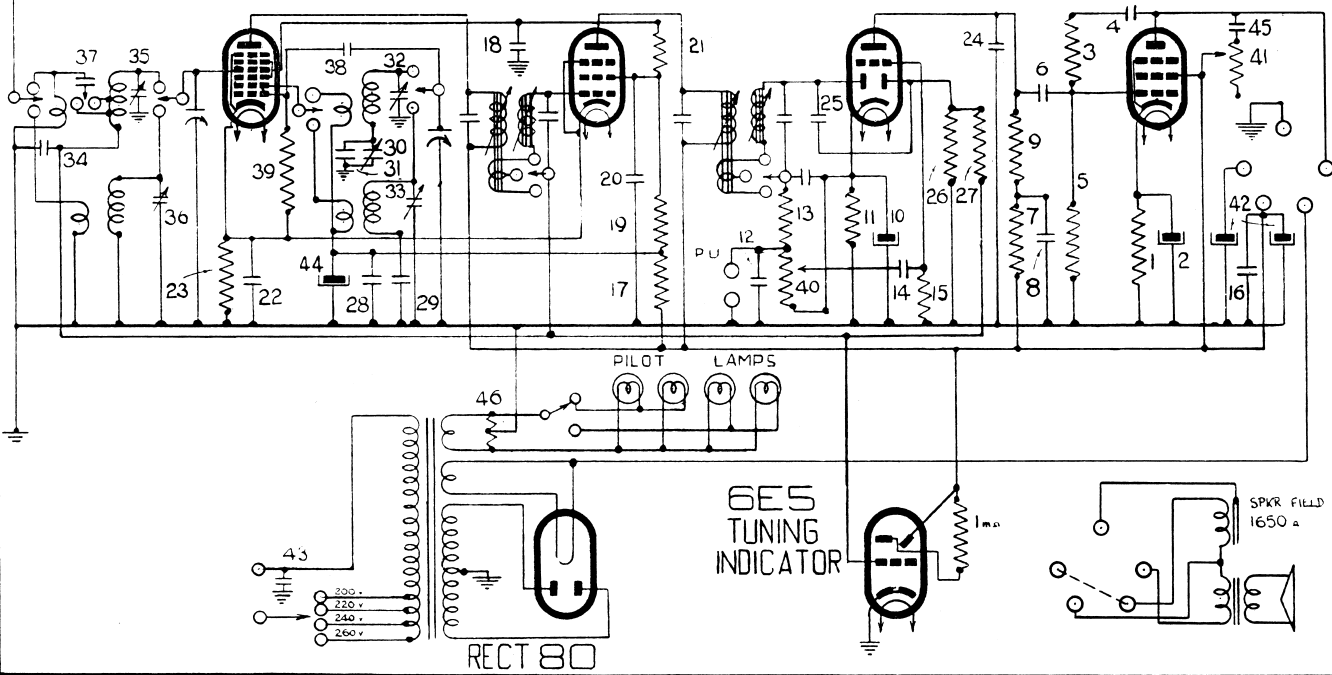


EK2 FREQ CONVERTER 606 -IF 75 DET AVC 1ST AUDIO EL 3 OUTPUT



| VALUES | | | | | |
|--------|-------------|----|-------------|----|-------------|
| 1 | 120 Ω | 2 | 100 mfd | 3 | 2 meg |
| 4 | .02 mfd | 5 | 1 meg | 6 | .1 mfd |
| 7 | 50,000 Ω | 8 | .5 mfd | 9 | .25 meg |
| 10 | 25 mfd | 11 | 5000 Ω | 12 | .0001 mfd |
| 13 | 100,000 Ω | 14 | .02 mfd | 15 | 1 meg |
| 16 | .5 mfd | 17 | 10,000 Ω | 18 | .1 mfd |
| 19 | 25,000 Ω | 20 | .1 mfd | 21 | 50,000 Ω |
| 22 | .5 mfd | 23 | 180 Ω | 24 | .00025 mfd |
| 25 | .0001 mfd | 26 | 1 meg | 27 | .5 meg |
| 28 | .1 mfd | 29 | .004 mfd | 30 | Bc Pd Trim |
| 31 | .00037 Trim | 32 | Bc Osc Trim | 33 | Sw Osc Trim |
| 34 | .1 mfd | 35 | Bc Aer Trim | 36 | Sw Aer Trim |
| 37 | .0005 mfd | 38 | 50 n.mfd | 39 | 50,000 Ω |
| 40 | .5 meg | 41 | 25,000 Ω | 42 | 8+8 mfd |
| 43 | .01 mfd | 44 | 8 mfd | 45 | .1 mfd |
| 46 | 50 Ω CT | | | | |

THOM & SMITH LTD
 29 39 BOTANY ROAD
 MASCOT NSW

Tasma MODEL 435 DUAL WAVE
 AC OPERATED SUPERHETERODYNE

DRN BY *B. H. ...*
 CHD BY *L. H. ...*
 APD BY *Ell ...*

DRAWING NO
 240

Tasma

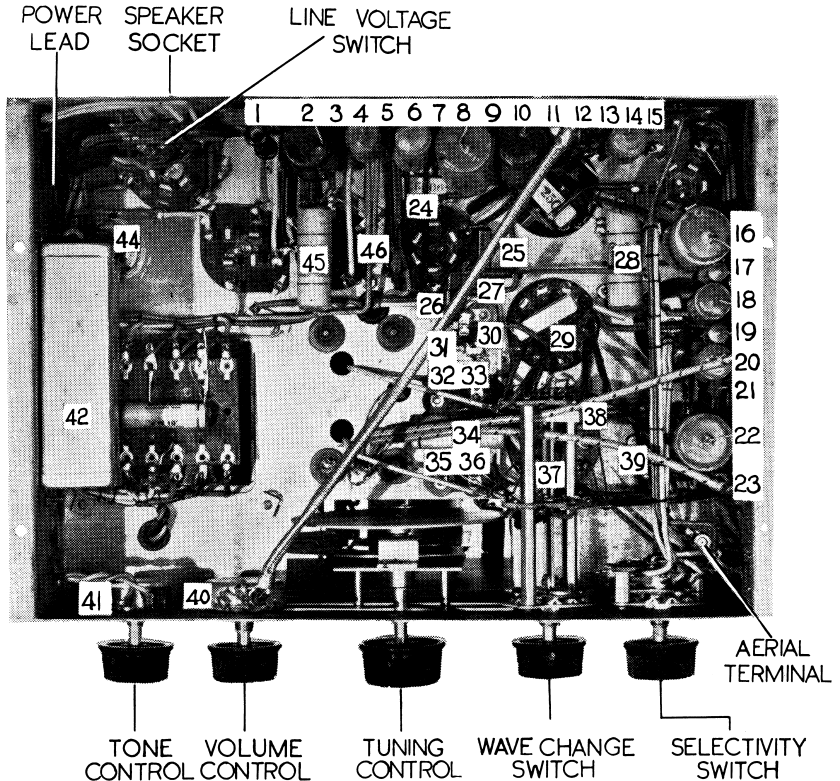
SERVICE DATA for

MODEL 435

DUAL WAVE SUPERHETERODYNE FOR A.C. OPERATION

TABLE OF VOLTAGES AND CURRENTS

| Valve | Function of Valve | Ef | Ep | Ip | Esg | Isg | Eg | Eag | Iag |
|-------|---------------------------|-----|---------|-------|-----|------|-----|-----|-----|
| EK2 | Mixer | 6.3 | 275 | 1 | 60 | 1.25 | 3 | 210 | 4 |
| 6D6 | Intermediate Amplifier | 6.3 | 275 | 10 | 110 | 3.5 | 3 | — | — |
| 75 | 2nd Det. A.V.C. 1st Audio | 6.3 | 150 | .5 | — | — | 1.5 | — | — |
| EL3 | Output | 6.3 | 260 | 28 | 275 | 4 | 6 | — | — |
| 80 | Rectifier | 5 | 350/350 | 28/28 | — | — | — | — | — |
| 6E5 | Tuning Indicator | 6.3 | 40 | .2 | — | — | — | — | — |

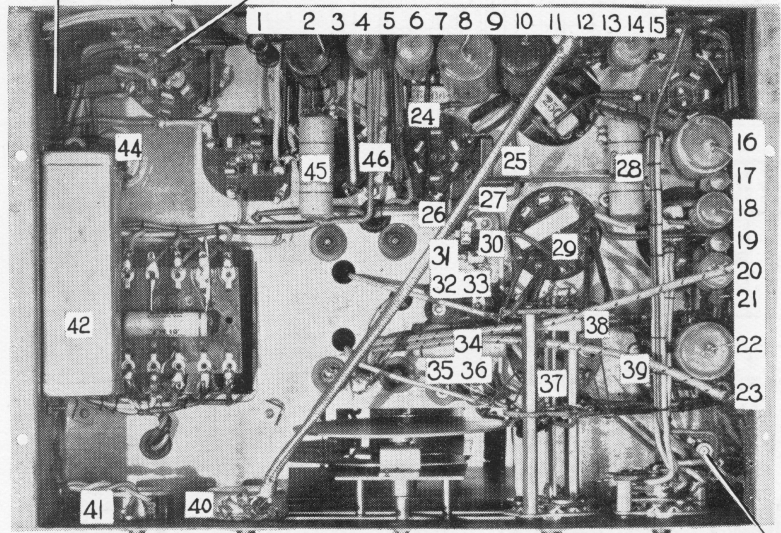


SUB-CHASSIS VIEW

LOCATION OF COMPONENTS :

The key on circuit diagram is numbered to correspond to the numbers on photograph of sub-chassis view.

POWER LEAD SPEAKER SOCKET LINE VOLTAGE SWITCH



41 40 42 44 45 46 24 25 26 27 28 29 30 31 32 33 34 35 36 37 38 39 16 17 18 19 20 21 22 23

TONE CONTROL VOLUME CONTROL TUNING CONTROL WAVE CHANGE SWITCH SELECTIVITY SWITCH AERIAL TERMINAL

SUB-CHASSIS VIEW

LOCATION OF COMPONENTS :

The key on circuit diagram is numbered to correspond to the numbers on photograph of sub-chassis view.